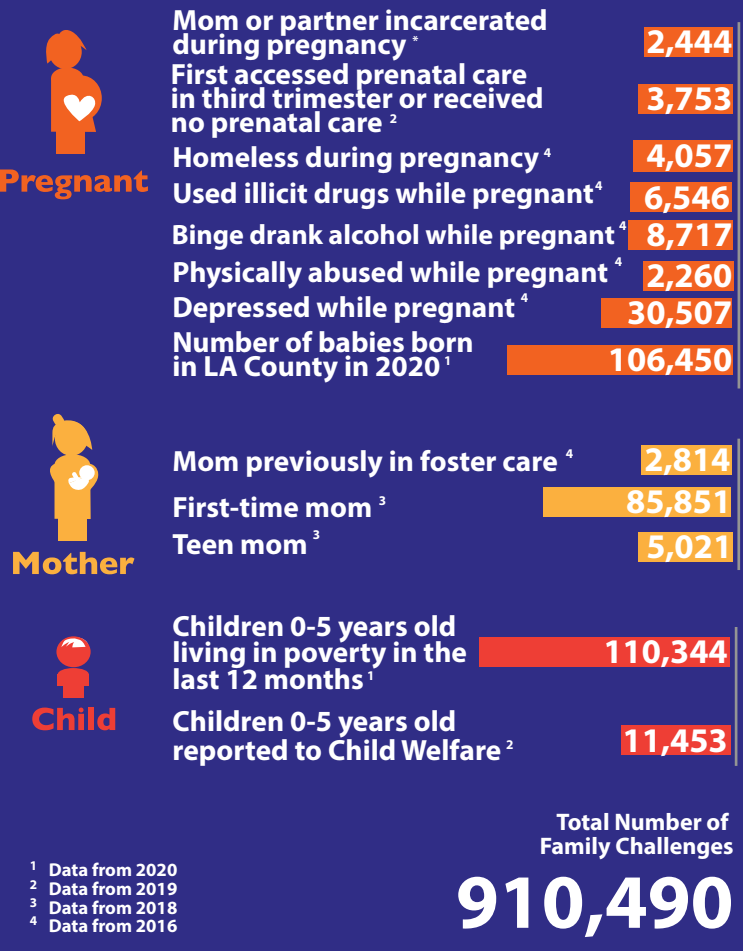


Each year in L.A. County nearly 750,000 children up to age 5 are eligible for home visiting services, but only about 37,000 (mostly ages 0-3) receive those services. That leaves about 95% without in-home support that has been shown to reduce abuse and neglect, enhance school readiness, and improve a variety of health outcomes.

(The exact size of the 0-5 population eligible for home visiting services is difficult to quantify due to overlapping risk categories.)

FAMILY CHALLENGES



NUMBER OF HOME VISITING SLOTS

